

4 DAYS 3 NIGHTS PONTIANAK TOUR PACKAGE	
TIME	DESCRIPTION
13:30PM - ARRIVAL 14:00PM 15:00PM 16:00PM – 17:00PM 18:00PM – 19:30PM 20:00PM 21:00PM – 22:00PM 22:30PM	Arrive at International Bus Central Check in at Hotel - HOTEL LUNCH – Own self Keraton Kadriah Supermarket Kaisar DINNER (Own self) – Ikan Bakar and Ayam Bakar ACI Arboretum Sylva Untan & Ayani Park Hotel drop off / Leisure Time
07:00AM – 08:30AM 09:00AM – 11:00AM 13:00PM 14:30PM – 17:00PM 19:00PM 20:00PM - 21:00PM 21:00PM	Breakfast at the Hotel - Hotel Pick Up Jami Mosque LUNCH (Own self) Equator Monument DINNER (Own self) – D'Bamboo Pontianak Taman Alun-Alun Kapuas Square Hotel drop off / Leisure Time
07:00AM – 08:30AM 09:00AM – 11:00AM 12:30PM 13:30PM - 15:00PM 18:00PM 19:00 - 20:30PM 21:00PM	Breakfast at the Hotel - Hotel Pick Up Betang House LUNCH (Own self) Museum Negeri Pontianak / Museum Kalimantan Barat DINNER (Own self) – Abang Kepiting (SEAFOOD) Ayani Megamall Hotel drop off / Leisure Time
07:00AM – 08:30AM 09:00AM – 11:00PM 12:00PM 12:30PM 14:30PM – 17:00PM 18:00PM 20:00PM 21:00PM - DEPARTURE	Breakfast at the Hotel - Hotel Pick Up Free Leisure Time Until Check Out Hotel Check Out LUNCH (Own self) Souvenir Pontianak Centre DINNER (Own self) – Restaurant Pondok Kakap Transfer back to International Bus Central for departure. Bon Voyage

Kota Khatulistiwa (Equator City)

Pontianak boasts a delightful blend of cultures, which live separately in their own sections of the city but come together amiably and often intermarry. Don't be surprised if you end up chatting with members of the Chinese, Dayak, Malay, Bugis, and Javanese communities all in one day. Travelers usually make a trip to Pontianak because they know it as one of the few cities sitting directly on the equator. Get around the area using taxis or a rented motorcycle, but drive carefully and keep in mind that many roads are not well maintained.

The Equator monument is located on the equator in Pontianak, Indonesia. It marks the division between the northern and southern hemispheres-

Sprawling just south of the equator and split by the lower reaches of the Kapuas River, Pontianak is urban Kalimantan in all its tin-roof, two-wheeled, traffic-jam glory. The main attraction here is the river itself – stroll along the boardwalks or cross by canoe taxi to get a feel for Indonesia's longest waterway.

Pontianak is also the main transport hub of West Kalimantan by air, boat and long-distance bus. From here you can head south by speedboat to Sukadana, north to Sinkawang (or cross-border to Kuching) or east to the Dayak longhouses and national parks of Kapuas Hulu.

TOUR HIGHLIGHTED & ITENERARY

DAY 1:

Upon arrival at International Bus Central, meet and greet by our friendly representative and transfer to Hotel for check in.

At evening, proceed to **KERATON KADRIAH**. A must visit location and getting a better understanding of the history and how the place developed from the early days. It is built in 1771 by Sultan Syarif Abdurrahman Alqadrie who was the first Sultan of the Sultanate of Pontianak, the Kadriah kingdom was in Tritura, Pontianak. The building is dominated by yellow and made of wood, wood in Borneo, known as the timber of wood due to its strength. While inside the building, you can find the throne of the sultan and queen, complete with photos, clothing and various other sultan's collections. One of his unique collections is his own handwritten Alquran by Sultan Syarif Abdurrahman Alqadrie. This tourist attraction is the funeral of seven Pontianak sultans and their families. The main tomb here is of course the tomb of the first sultan, Sultan Syarif Abdurrahman Alqadrie, who is in the room right in the center of the complex and shaped like a small bunker.

Continue your journey to **SUPERMARKET KAISAR**. The supermarket is located in the middle of the city of Pontianak in Pontianak Pattimura Street. These supermarkets sell different types of food and other groceries. On the second floor also offers a wide variety of clothing. The supermarket also provides a card called the Emperor Card to buyers to get the point. The supermarket also provides a larger parking lot, one dealing with a highway and another one next to the supermarket.

At night, proceed to **ARBORETUM SYLVA UNTAN PARK & AYANI PARK**. The city of Pontianak, Arboretum and Ayani park is one of the efforts of the Pontianak Government to provide a representative public green open space. Two new parks inaugurated the mayor of Pontianak on New Year's Eve 2018. There are many interesting things in this both park. In the Ayani park, for example, this park provides Pontianak information center as it provides information on the history of Pontianak leadership, historic buildings, as well as special foods displayed through glass boards that can be found if visitors go around the park. Meanwhile in Sylva Untan Arboretum Park provided the Garden Roof Top Garden facility, the relief of a heritage warrior, a plaza and a garden bench. There are many facilities provided in the two parks. At Taman Ayani, for extraterrestrial lovers, there is a place to play skate park, there is also a three in one basketball play area, a chess park, a selfi zone, a digital library and a General Electric Filling Station (SPLU). While in Sylva Untan Arboretum Park provided the Garden Roof Top Garden facility, the relief of a heritage warrior, a plaza and a garden bench. The concept of the park is an integrated concept, especially for the needs of young people. After tour, transfer back to Hotel for overnight.



KERATON KADRIAH



**TAMAN ARBORETUM SYLVA
& TAMAN AYANI**



SUPERMARKET KAISAR

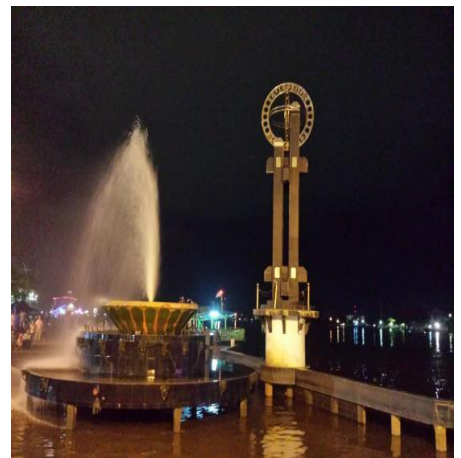
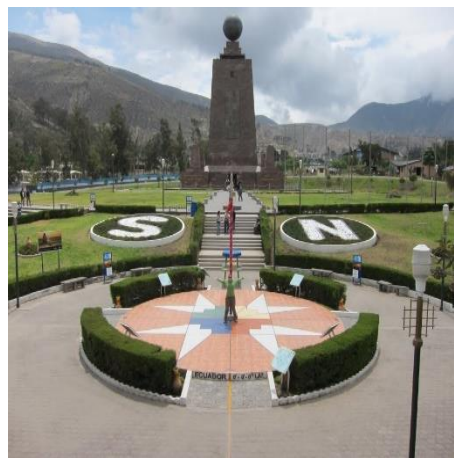


DAY 2:

Upon pick up from the hotel lobby, after breakfast proceed to **JAMI MOSQUE**. One of the historical building of Pontianak Jami Mosque also known as Sultan Syarif Abdurrahman Mosque, is the oldest mosque of Pontianak, in Kalimantan, Indonesia. The large wooden mosque was painted in yellow and green, the west side of the mosque is the famous Kapuas river. The floor made from wood, and covered by the carpet together with the royal palace of Kraton Kadriyah, was among the first buildings constructed in the city following the establishment of Pontianak in 1771. Until today, the mosque is still maintained and utilized regularly to accommodate regular Islamic prayers.

After lunch, continue your trip to **EQUATOR MONUMENT**. Stand with one foot in the Northern Hemisphere and the other in the Southern at Equator Monument. The small monument consists of four poles topped with an arrow and three consecutive rings, pointing along the equator. This structure stands in place of an earlier monument, a simple pole and arrow put there by an unknown Dutch explorer in 1928. Because the planet has shifted on its axis slightly, the monument no longer sits exactly on the equator--a line right next to the monument shows its true position.

At night, after dinner proceed to **TAMAN ALUN-ALUN KAPUAS SQUARE**. This recreational park is located at Jalan Rahadi Oesman, right in front of the office of City Mayor of Pontianak. Alun Kapuas Park is a beautiful and comfortable place to relax while enjoying the view of the Kapuas River and its activities. It is a popular city park along the Kapuas River featuring esplanades around a monumental central fountain. Every late afternoon, locals love to gather around the river banks. There are a lot of children's attractions, such as traditional games, bicycling, skateboarding, and many others. Just before sunsets, usually there are people offering their boat service for short cruise along Kapuas. The **Kapuas river-cruise** starts just before sunsets on a motorized boat. On the boat you can purchase some food to eat while having chat with the locals. The boat goes through a short-route, from the Alun-Alun Kapuas, until under the **Kapuas Bridge**. The bridge itself looks stunning at night, as the colors are changing regularly. From the bridge, the boat will go back to where it departed. It takes about one hour for the cruise, normally it's already dark when you get back. Once you are back, you can hunt for cheap stuffs on Alun-Alun Kapuas. Please remember that the complex can be extremely loud at night, bad music are played repeatedly through massive speakers. After tour, transfer back to Hotel for overnight.



JAMI MOSQUE

EQUATOR MONUMENT

TAMAN ALUN-ALUN KAPUAS SQUARE

DAY 3:

On your third day, after breakfast proceed to **TRADITIONAL HOUSE BETANG**. Betang House is a typical Kalimantan traditional house which is found in various parts of Kalimantan and is inhabited by Dayak people, especially in the upper reaches of the river which is usually the center of Dayak tribal settlements. Each Betang House is inhabited by 100-150 people, Betang can be said to be a tribal house, in addition there is one large family that becomes its inhabitants and is also led by a [Pambakas Lewu]. In certain Dayak tribes, the making of a Betang house must meet the following requirements including the upstream must be in the direction of the sunrise and downstream towards the sunset. This is considered as a symbol of hard work to survive from the sunrise to sunset. All Dayak tribes, except the Punan Dayak tribe who live wandering, initially reside in communal living together in the house of betang / longhouse, commonly called Lou, Lamin, Betang, and Lewu Hante.

Continue your journey to **MUSEUM NEGERI PONTIANAK** after finish lunch. Museum Kalimantan Barat is quite near with Traditional House Betang in Jalan Jenderal Ahmad Yani. Therefore, can pay a visit to these two places. Museum Negeri Pontianak also known as Museum Kalimantan Barat which is a modern building that decorated with local ornament. The objects of historic relics are stored and displayed properly. At the front of the museum, the visitor can see a relief depicting the events of the struggle for independence. Replica houses included Betang House, Limas House, Ismahayana Palace Landak, Al-Mukkaramah Palace Sintang ang many more. All those house looks beautiful. Pancar is a gate entering a village or symbol of village guard which found at Darit area, Landak district. The two poles or pancar poles are craved with human, animal and plant motif which symbolize inhabitant of universe.

At night, proceed to **AYANI MEGAMALL**. The Mall is arguably the biggest mall in Pontianak. Around him there are some mall shop, including souvenir Dunkin ' Donuts, and police station. In addition to the mall is the hotel Mercure then staying at hotels that can access this mall with ease. This Mall there are 4 floors (ground floor of s/d floor 3). There are many shops: food, books, fashion, electronics. If seen from above, the design of the mall his arguably similar to the bone or the letter H but not rounded lines down. Somehow this mall but there are 3 places arcade, including in the XXI. If you're in Pontianak and love shopping, it is recommended to visit this mall. After tour, transfer back to Hotel for overnight.



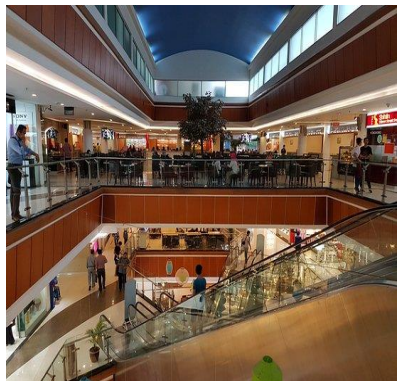
**TRADITIONAL HOUSE
BETANG**



**MUSEUM NEGERI
PONTIANAK**



AYANI MEGAMALL



DAY 4:

On your last day in Pontianak, after breakfast you are free at leisure time until check out the hotel.

Then continue your journey to **SOUVENIR PONTIANAK CENTRE** for Shopping. Pontianak Souvenir Center or commonly known as PSP is a special market for the sale of various souvenirs typical of West Kalimantan. Visitors of West Kalimantan Province or West Kalimantan people who want to find various souvenirs of course really need the place to meet their needs PSP provides a variety of souvenir needs that are typical of West Kalimantan for visitors. The PSP is 50 meters from Mall Matahari Pontianak, this strategic location makes PSP the market that is always crowded with consumers from Pontianak, outside Pontianak, as well as outside Indonesia. Souvenirs found on PSP are the result of hard work by traditional artists in West Kalimantan. The price offered for obtaining souvenirs is quite cheap, depending on the quality and size and the souvenir model that visitors buy.

At evening, free at leisure time until transfer back to **INTERNATIONAL BUS CENTRAL** before the departure.



SOUVENIR PONTIANAK CENTRE



INTERNATIONAL BUS CENTRAL



NO OF PAX	1 PAX	10 PAX
PACKAGE RATE FOR PAX	RM550	RM5500

***Minimum 8 pax**

INCLUDES	EXCLUDES
<ul style="list-style-type: none"> • A deluxe air-conditioned vehicle with a professional driver for entire touring and airport transfers • Accommodations • Licensed professional tour guide in your preferred language • Entrance fees of all the sites as marked on the itinerary • Bus Ticket (ROUND TRIP) 	<ul style="list-style-type: none"> • Optional Tour • Lunch & Dinner en-route tour

ITEMS TO BRING
Wear comfortable walking shoes; Light clothing; Pontianak being in the tropics, it is advisable to dress light; Bring Camera for those unforgettable moments/ Swimming Suit/ Bath Towel/ Sun screen protection/ Sunglasses/ Lotion/ Sunhat/ Insect repellent/ Changes of clothes/ raincoat, own drinking bottle and first aid kit.
REMARKS/NOTE
<p>Every person participates in any tour or holiday organized by the company shall be regarded in every respect as carrying his / her own risk with respect to loss or injury to person or property. The company does not accept responsibility for losses or expenses due to delay, sickness, weather, strikes, war, quarantine or other travelers.</p> <ul style="list-style-type: none"> • Confirmation will be received at time of booking • Child Ticket: Age 3-11 • Children aged 0-2 can participate free of charge • Children must be accompanied by a paying adult at all times • Infants must be seated in the lap of an adult. No child seats or baby capsules are provided. <p>Please note: The hotel picks up time for the tour and wait at the lobby 5 minutes before the tour pick up time. Tour receipt must be presented to the driver during the tour.</p> <p>This tour is not recommended for pregnant women, guests with heart problems or other serious medical conditions and those with disabilities or wheelchair users.</p>